

Clase de 2010 - Se una estrella ★ Juega para Ganar

Directora
con una DIQ:



Sherry Belisle

Sherry Belisle's
DIQ Carrie Bloink
16 TM/\$3,383

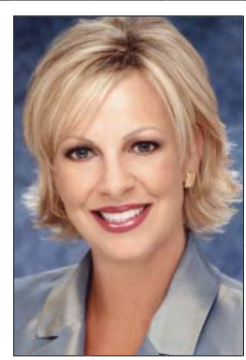
Future Director
Stephanie Glaab
15 TM/\$1,232

Team Leader
Kelly Pitt
7 TM/\$2,650

Star Team Builders
Nadine Sarvo
Rose Lloyd-Rose
Dara Cockrum
Sherry Bourque



Carrie
Bloink



Lise Clark's
Team Leaders
Renee Rodbell
9 TM/\$1,896



Zaira Espinosa's
Team Leader
Esmeralda Salazar
8 TM/\$1,015



Erika Fonseca's
Future Director
Modesta Arias
8 TM/\$1,934



Maria Ramales'
Team Leader
Rafael Mazariego
5 TM/\$1,825



Halle Simpson's
Team Leader
Shara Davis
8 TM/\$834

Danyel Russell
7 TM/\$826
Star Team Builders
Christina Flemons
Kristi Gravelle

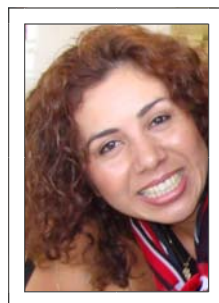
Star Team Builders
Maria Lopez
Irene Cuevas

Star Team Builder
Margarita Reyes

Star Team Builders
Ami Buckler
Katie Johnson
Misty Howard



Teresa Castro's
Star Team Builders
Aida Agustiniano
Guadalupe Palacios



Martha Martinez'
Star Team Builder
Claudia Villa



Sharon Parker's
Star Team Builder
Audra Baxter



Dora Zavala's
Star Team Builders
Lynne Reyes-Trujillo

!!!Ponte a la Caza del "Rojo" en Octubre!!!

LEADERSHIP 2010
 SAN DIEGO, CA
 JAN. 10-13, 2010

JULY 1, 2009 - Nov 30, 2009
BE AT EVERY PARTY!!!



UNDER THE BOARDWALK PARTY!

On Target for \$300,000 Circle of Achievement & Above
 \$125,000 est. unit retail production

UNIT PRODUCTION

WHOLESALE RETAIL

July	_____	_____
August	_____	_____
September	_____	_____
October	_____	_____
November	_____	_____
December	_____	_____

On Target for \$650,000 Circle of Achievement & Above
 Attend a Pre-Party Reception

ON TARGET COURT OF SHARING

10 Qualified Personal New Team Members

- | | | |
|-----|-------|-----------------------|
| 1. | _____ | Date Qualified: _____ |
| 2. | _____ | Date Qualified: _____ |
| 3. | _____ | Date Qualified: _____ |
| 4. | _____ | Date Qualified: _____ |
| 5. | _____ | Date Qualified: _____ |
| 6. | _____ | Date Qualified: _____ |
| 7. | _____ | Date Qualified: _____ |
| 8. | _____ | Date Qualified: _____ |
| 9. | _____ | Date Qualified: _____ |
| 10. | _____ | Date Qualified: _____ |

ON TARGET COURT OF SALES

Minimum \$15,000 Personal Retail

WHOLESALE RETAIL

July	_____	_____
August	_____	_____
September	_____	_____
October	_____	_____
November	_____	_____
December	_____	_____

Total Personal Retail July 1 - Nov 30: _____



POWER PLAYERS LUNCHEON

* Be an Honor Society or Triple Crown Winner Jan 1-Dec 1, 2009

* Debut as Class of 2010 using new DIQ rules Aug 1-Dec 1, 2009

* Have 2 or more Offspring Sales Directors Jan 1-Dec 1, 2009

STAR FUSION BANQUET
13 OR MORE UNIT STARS

JUN 16 - DEC 15, 2009

- | | |
|-----|-------|
| 1. | _____ |
| 2. | _____ |
| 3. | _____ |
| 4. | _____ |
| 5. | _____ |
| 6. | _____ |
| 7. | _____ |
| 8. | _____ |
| 9. | _____ |
| 10. | _____ |
| 11. | _____ |
| 12. | _____ |
| 13. | _____ |

** You must be a Star in both quarters to attend!

BEE FOCUSED
10 PERSONAL QUALIFIED!

EARN CRYSTAL BEE EARRINGS!

STATE HIGHEST OR MOST IMPROVED

JAN 1- Nov 30, 2009

#1 IN STATE & MOST IMPROVED

Top Director Trip 2010 - Greek Isles Cruise...65-80 Stars and you will represent our area!